

Easy Triangular Shawl

© 2010 Deborah A. Cooke



EASY TRIANGULAR SHAWL v1.2- ©2010 Deborah A. Cooke - 1

*This pattern is copyrighted and is intended for personal use only.
Please do not reproduce this pattern, sell it or sell items made from it,
without the express written permission of Deborah Cooke.*

Finished Size after blocking:

72” across long edge
36” from centre back to longest point

Materials:

for the green shawl (pictured on cover page):

250g (750m) Fleece Artist Nyoni
4.0 mm circular needle
stitch markers
darning needle to sew in ends
blocking wires and pins

for the blue shawl (pictured on Ravelry pattern page):

4 x 50g (208m each) Diamond Yarns Luxury Collection, Fancy Free
4.0 mm circular needle
stitch markers
darning needle to sew in ends
blocking wires and pins
35 grams of size 6/0 beads (approximately 500)
crochet hook - choose a size that fits through the bead and can pull a loop of the yarn back through it

Gauge:

Stockinette stitch, measured after blocking.
18 sts and 30 rows = 4" or 10 cm

Matching gauge with lace is less important than creating a fabric you like with the selected yarn. I provide it only because differences in gauge will indicate a difference in finished size.

Abbreviations:

K - knit
P - purl
YO - yarn over
PM - place marker
M - make
SSK - slip next two stitches, one at a time, move them back to the left needle and knit them together through the back
K2tog - knit two stitches together
S2KP - slip two stitches, knit next stitch, pass slipped stitches over
K1 - the centre stitch is marked in bold type in the written instructions

Notes

When Nyoni was introduced as a sample yarn, it was put up in large skeins of 250g/750m. The sample shawl used one of these big skeins. Nyoni has more recently been made available in smaller skeins - please ensure that you have 750m. You can substitute any fingering weight yarn.

The green sample shawl was knitted in stockinette stitch. The blue sample shawl was knitted in garter stitch. The only difference between them is the working of the wrong side rows - on the green, WS rows (inside the border) stitches were purled; on the blue, WS rows were knit. Either variation will use approximately the same quantity of yarn.

The shawl is worked from the centre back down to the hem. Regardless of whether you choose to knit the main part of the shawl in garter stitch or stockinette stitch, there are two border stitches worked in garter stitch on the outside edges of the shawl. There is also a single stitch at the centre of the shawl, marked in red on the charts and bold type in the written instructions. You can work this centre stitch in either stockinette or garter.

Slipping the first knit stitch of every row gives a neater selvedge so the directions are written that way. It matters less whether you slip knitwise or purlwise than that you are consistent and always slip the same way.

This pattern does not include instructions for a garter tab at the cast on, because I think it looks too bulky in fingering weight yarn. You can substitute those directions if you choose. If you cast on as instructed here, close the opening of the cast on edge when sewing in the end of the yarn.

The charts show from the right edge to the centre of the shawl. The centre stitch is shown in red at the left - in chart D, the centre panel of mesh is shown in red. Work the chart from right to left to the centre stitch, work the red centre part or stitch once, then work the main chart again from left to right, reversing the decrease stitches (SSK instead of K2tog and K2tog instead of SSK) to complete the row.

There are written instructions for the body of the shawl, but not the border. In the written instructions, the middle stitch is marked in **BOLD**.

There are beads on the hem of the blue shawl. These are added on the WS row, using the crochet hook method. To do this, work to the stitch that should have a bead. Put a bead on your crochet hook. Pick up the stitch from the left needle with the crochet hook. Put the bead on to the stitch. Put the stitch back on the left needle, then work the stitch. Continue to the next stitch requiring a bead.

Instructions:

Cast on 5 stitches.

Follow the written instructions for rows 1 - 41 or follow Chart A.

Row 1 - K2 (selvedge stitches), PM, YO, **K1** (center stitch), YO, K2 (selvedge stitches)
7 stitches total

Row 2 and all subsequent even (wrong side) rows:
For stockinette stitch version - K2, P to last two stitches, K2
For garter stitch version - K to end

Row 3 - *for the stockinette version* - Slip 1, K1, YO, K1, YO, **K1**, YO, K1, YO, K2
11 stitches total

Row 3 - *for the garter stitch version* - Slip 1, PM, K1, YO, K1, YO, **K1**, YO, K1, YO, K2

This new marker is in the middle of the right selvedge. It's added because right side and wrong side rows are harder to tell apart in garter stitch projects. Whenever you are ready to work a row and this marker is at the right edge, the right side of the work is facing you: you will work an odd-numbered row.

11 stitches total

Row 5 - Slip 1, K1, YO, K3, YO, **K1**, YO, K3, YO, K2
15 stitches total

Row 7 - Slip 1, K1, YO, K5, YO, **K1**, YO, K5, YO, K2
19 stitches total

Row 9 - *Begin first line of eyelets* - Slip 1, K1, YO, K1, K2tog, YO, K1, YO, SSK, K1, YO, **K1** (centre stitch), YO, K1, K2tog, YO, K1, YO, SSK, K1, YO, K2
23 stitches total

Row 11 - Slip 1, K1, YO, K2, K2tog, YO, K1, YO, SSK, K2, YO, **K1**, YO, K2, K2tog, YO, K1, YO, SSK, K2, YO, K2
27 stitches total

Continue as established, adding four stitches per right side row and continuing the eyelet lines to 87 stitches total, ending with a WS row.

Follow the directions for rows 43 to 109, or follow Chart B.

Row 43 - *Begin 4 additional lines of eyelets* - Slip 1, K1, YO, *K2tog, YO, K1, YO, SSK, K13 **, Repeat from * to ** once, K2tog, YO, K1, SSK, YO, **K1**, YO, Repeat from * to ** twice, K2tog, YO, K1, SSK, YO, K2

Row 45 - Slip 1, K1, YO, K1, *K2tog, YO, K1, YO, SSK, K13 **, Repeat from * to ** once, K2tog, YO, K1, SSK, K1, YO, **K1**, YO, K1, Repeat from * to ** twice, K2tog, YO, K1, SSK, K1, YO, K2

Continue as established, adding four stitches per right side row and continuing the eyelet lines to 159 stitches total, ending with a WS row.

Row 79 - *Add 4 additional lines of eyelets* - Work as instructed for Row 43 but this time, work four repeats from * to ** on each side of the centre stitch.

Continue as established, adding four stitches per right side row and continuing the eyelet lines to 223 stitches, ending with a WS row.

*NOTE - the second repeat of Chart B (rows 79 to 109) does not complete the chart.
Do not work those last two pattern rows.*

Work Chart C, three times as indicated. Note that the first row is a set up row, and is only worked before the first repeat.

Work Chart D, adding beads as indicated, if desired.

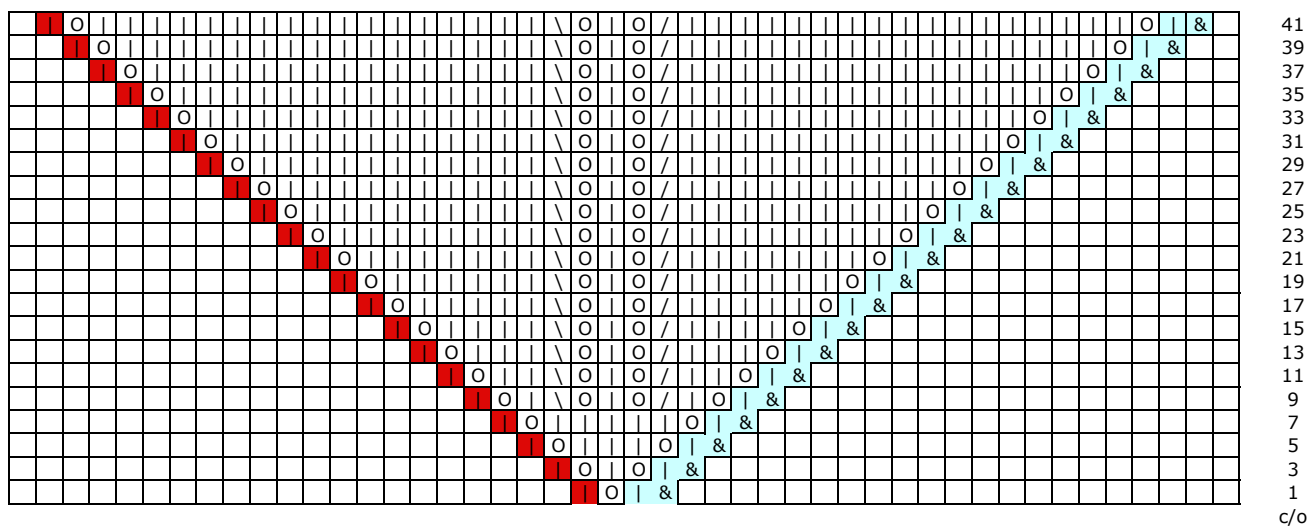
Work 3 rows in garter stitch.

Cast off loosely, using a suspended bind off or other stretchy bind off.

Finishing:

Soak shawl in cool water, then block and leave to dry. Sew in ends and wear.

Chart A



- & Slip stitch on right side row, knit on wrong side
- | Border stitch - knit on both right and wrong sides
- O Yarn over
- | Knit stitch on right side, purl on wrong side
- / K2tog on right half; SSK on left half
- \ SSK on right half; K2tog on left half
- Centre stitch - knit on right side, purl on wrong side
- ^ S2KP - Slip 2 stitches, knit next stitch, pass 2 sts over

Chart B

For Rows 43 to 77, work shaded area twice on each side of centre stitch
For Rows 79 to 109, work shaded area four times on each side of centre stitch

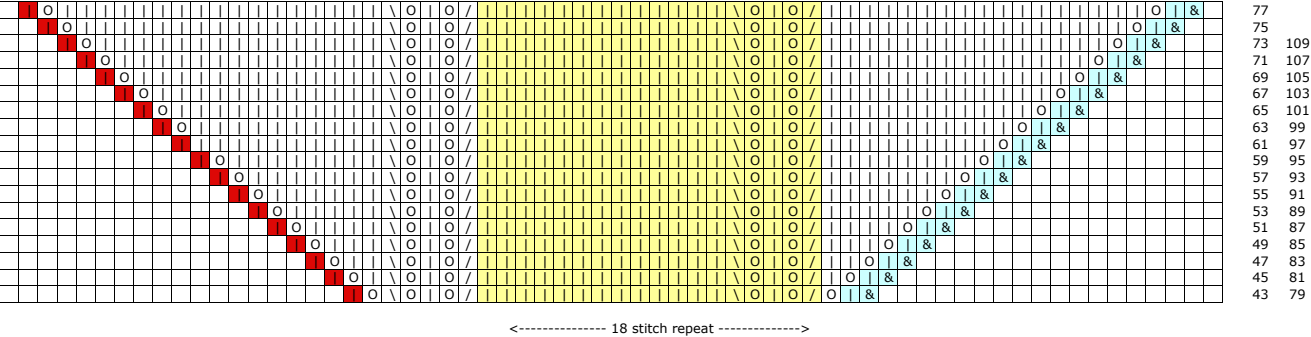
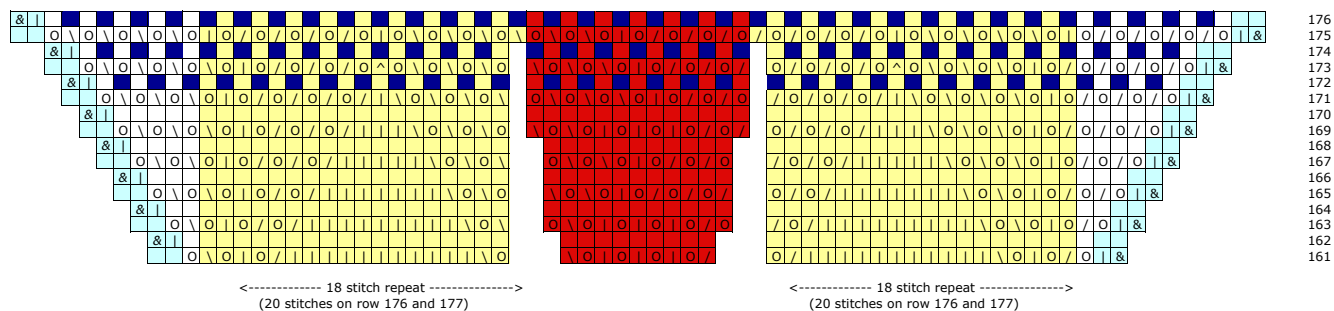


Chart C

127	143	159
125	141	157
123	139	155
121	137	153
119	135	151
117	133	149
115	131	147
113	129	145
111		

<----- 18 stitch repeat ----->

Chart D



- Place bead
- Work 9 times on each side of centre
- Centre stitches - work once only

On Rows 163, 167, 171 and 175, you will need to move your markers.
Move them one stitch to the left on the first half on the shawl,
and one stitch to the right on the second half of the shawl.